



**CRISIL's
agricultural commodity
dashboard**

Research

A single dashboard for gauging price-impacting factors and outlook

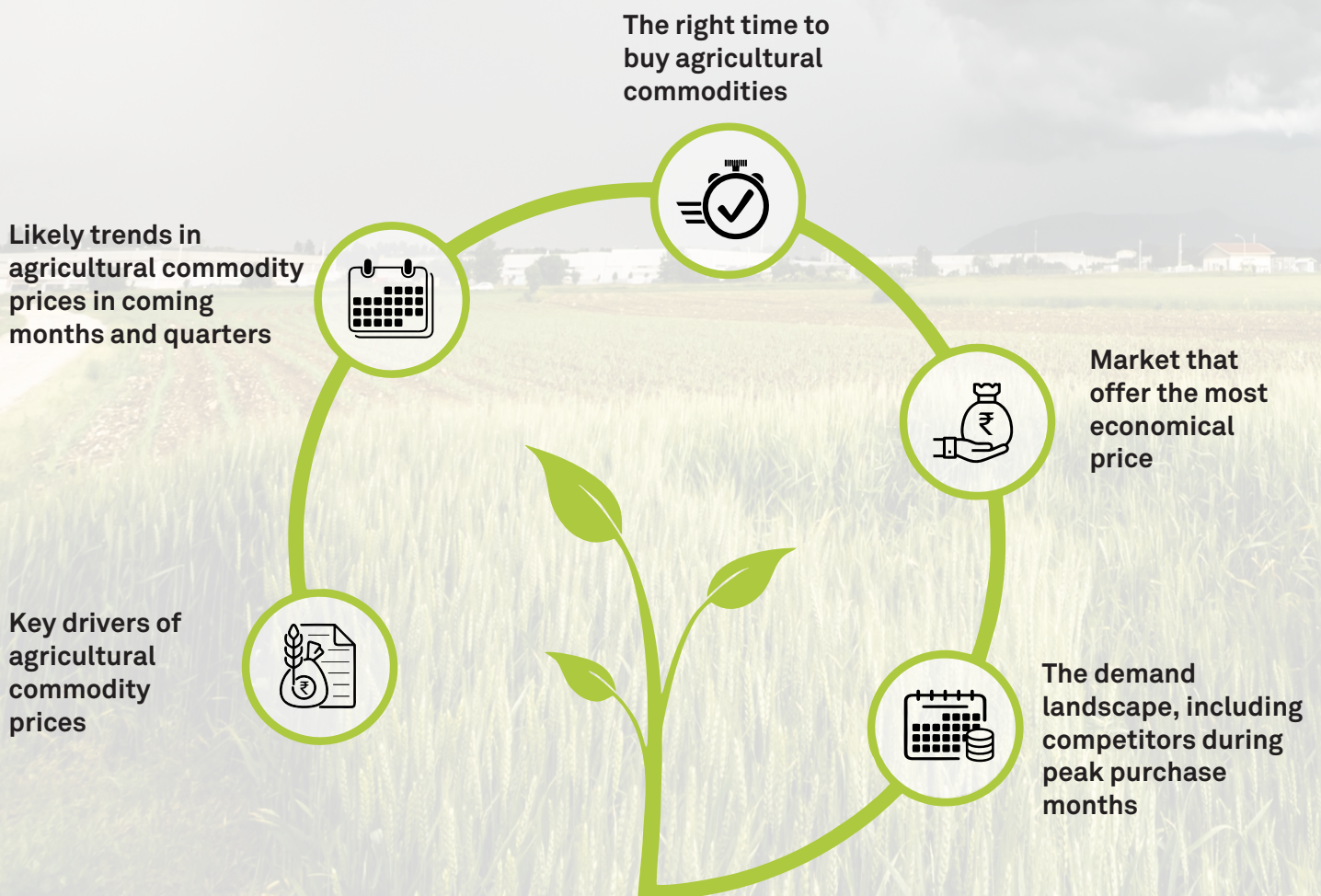
Raw material costs typically comprise 65-70% of revenue for most food manufacturers. Given the sharp rise in commodity prices, induced by adverse geopolitical developments, elevated inflation levels, and climate change, companies need to monitor agricultural commodities more closely.

CRISIL's agricultural commodity dashboard helps here.

Leveraging CRISIL's deep domain knowledge and research capability, it provides detailed analysis of factors affecting the prices of key agricultural commodities, and our outlook thereon, enabling procurement managers to make strategic procurement decisions.

The dashboard also offers demand trends for agricultural commodities across industries and a snapshot of the competitive landscape to enable efficient procurement of raw material

The insights include:



Key factors analysed by the dashboard

Key factors analysed

Elements tracked

Supply



Weather report, sowing status, yield, production, post-harvest losses, stock availability, arrival dynamics, and crop condition

Demand



Domestic demand across industries, household demand, export demand, imports, and minimum stock requirement

Commodity balance sheet



Production, consumption, export, and inventory levels of an agricultural commodity

Micro market



State-/ region-wise supply dynamics, price trends, and labour availability

Government regulations



Impact of change in policies, grant of subsidies, budget allocations, and duties on export/import of commodities



Key coverages of the dashboard








Daily dashboard | Daily price and outlook for the next week

Weekly dashboard | **Monthly dashboard**

- Sowing and crop statuses
- Updated insights from farmers
- Regular updates on mandi arrivals at select mandis
- Demand from multiple industries and households
- Price and outlook for next week/month/quarter
- Key market insights from traders
- Balance sheet of agricultural commodities
- Impact of various government regulations on supply and price

Quarterly dashboard | **Fortnightly dashboard**

Commodities covered

-  **Edible oil**
Groundnut oil, palm oil, sunflower oil, soybean oil
-  **Grains and related products**
Wheat, maida, suji, aata
-  **Pulses and related products**
Gram, besan
-  **Softs**
Sugar
-  **Dairy**
Milk, skimmed milk power
-  **Spices**
Chilli, cumin, turmeric
-  **Horticulture**
Onion, tomato, potato

To know more, please contact:

Niharika Gudadur
niharika.gudadur@crisil.com | +91 99023 25491

Poorti Nagre
Poorti.nagre@crisil.com | +91 91680 50392

www.crisil.com

About CRISIL Limited

CRISIL is a leading, agile and innovative global analytics company driven by its mission of making markets function better.

It is India's foremost provider of ratings, data, research, analytics and solutions with a strong track record of growth, culture of innovation, and global footprint.

It has delivered independent opinions, actionable insights, and efficient solutions to over 100,000 customers through businesses that operate from India, the US, the UK, Argentina, Poland, China, Hong Kong and Singapore.

It is majority owned by S&P Global Inc, a leading provider of transparent and independent ratings, benchmarks, analytics and data to the capital and commodity markets worldwide.

About CRISIL Research

CRISIL Research is India's largest independent integrated research house. We provide insights, opinion and analysis on the Indian economy, industry, capital markets and companies. We also conduct training programs to financial sector professionals on a wide array of technical issues. We are India's most credible provider of economy and industry research. Our industry research covers 86 sectors and is known for its rich insights and perspectives. Our analysis is supported by inputs from our network of more than 5,000 primary sources, including industry experts, industry associations and trade channels. We play a key role in India's fixed income markets. We are the largest provider of valuation of fixed income securities to the mutual fund, insurance and banking industries in the country. We are also the sole provider of debt and hybrid indices to India's mutual fund and life insurance industries. We pioneered independent equity research in India, and are today the country's largest independent equity research house. Our defining trait is the ability to convert information and data into expert judgments and forecasts with complete objectivity. We leverage our deep understanding of the macro-economy and our extensive sector coverage to provide unique insights on micro-macro and cross-sectoral linkages. Our talent pool comprises economists, sector experts, company analysts and information management specialists.

CRISIL Privacy Notice

CRISIL respects your privacy. We may use your contact information, such as your name, address, and email id to fulfil your request and service your account and to provide you with additional information from CRISIL. For further information on CRISIL's privacy policy please visit www.crisil.com/privacy.

Argentina | China | Hong Kong | **India** | Poland | Singapore | UAE | UK | USA

CRISIL Limited: CRISIL House, Central Avenue, Hiranandani Business Park, Powai, Mumbai – 400076. India
Phone: + 91 22 3342 3000 | Fax: + 91 22 3342 3001 | www.crisil.com

[in/company/crisil](https://www.linkedin.com/company/crisil) | [@CRISILLimited](https://twitter.com/CRISILLimited) | [f/CRISILLimited](https://www.facebook.com/CRISILLimited) | [yt/user/CRISILLimited](https://www.youtube.com/user/CRISILLimited) | [/lifeatcrisil](https://www.instagram.com/lifeatcrisil)

CRISIL
An S&P Global Company