

Our Other Projects



Sampige, Mangalore

Mallige, Mangalore

Sugandhi, Mangalore

Gulabi - Banglow, Mangalore

Sugandhi, Shimoga

Sooryakanthi, Hubli

Sevantige, Mangalore

Sooryakanthi, Mangalore



T3 URBAN DEVELOPERS LTD.

Hubli Branch: 205, Royal Mansion, Shanthi Colony, Vidyanagar,
Hubli, Karnataka State, Pin Code - 580021.
Website : www.t3urbandevelopers.com
Email : info@t3urbandevelopers.com

Mangalore Branch Office

T3 URBAN DEVELOPERS LTD.
2nd Floor, Harman Complex, B.C. Road,
Mangalore, Karnataka State - 574 219.
Ph: 08235 - 234686

Head Office

T3 URBAN DEVELOPERS LTD.
201, Corporate Arena, Off. Aarey Piramal Road,
Near Railway Station, Goregaon West, Mumbai - 400062
Ph: 022-67251081.

Shimoga Branch Office:

T3 URBAN DEVELOPERS LTD.
26/A, Bensaka, Swamy Vivekananda Extension
Behind Good Luck Cantonment
Shimoga, Karnataka State,
Pin Code - 577 201

Project Architects

HEGDE AND HEGDE
Architecture Engineering Interiors Valuation
17, 2nd Cross, Vidyanagar, Hubli-580021. Ph: 0838 2374312, Fax No: 0838-4251227
email: hegde@hegdeandhegde.com

Project Approved / Financed by
 State Bank of India

it is not a **BROCHURE**
it is a **PROMISE**



Sugandhi

Renuka Nagar, Hubli.

For Booking Contact :

M. Praveen Kumar : 9740558246
Stany Lobo : 9900995720
V P Lobo : 9321292899

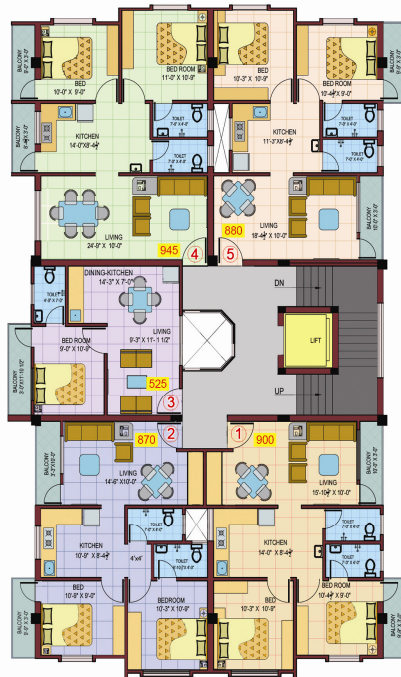
Email : info@t3urbandevelopers.com
website : www.t3urbandevelopers.com



The Brochure is purely conceptual and is not a legal offering. The promoters / architects reserve the right to add / delete / alter any detail / specifications / elevation mentioned herein, without notice.
The Size, Shape, Colour, Shade, Type & Brand may change from time to time, subject to availability in the market.

Spacious Floor Plan

Typical Upper Ground, First & Second Floor Plan



Project Highlights

BUILDING AMENITIES

- "VASTHU SHASTRA" Design
- "FREE & ALLOTTED" Car Parking Space for All
- "MODULAR KITCHEN" with burner & Chimney for all Apartments
- "24 HRS" Security
- "24 HRS." drinking water
- "ACCOUSTIC" Generator for Elevator, Common Lights & Apartments
- "ECE" 6 passengers Automatic Lift
- "Cable TV" connection for all apartments
- "ASTHETICALLY" designed common area, corridor & Staircase

APARTMENT AMENITIES

- "24 HRS. HOT WATER" for Bath room through solar system
- "L&T / ABB / ANCHOR / HAVELL'S / LEGRAND" Modular switches
- "SIMPOLO / EURO / HINDWARE" luxurious sanitary ware with soft close W.C.
- "LUSTRE / EMULSION PAINT" for walls and ceiling
- "HINDWARE / JAQUAR / ESS ESS / ACQUEL" Designer fittings
- "DECORATIVE" Main Entrance door with Teakwood door frame
- "INTERCOM" system connecting apartments & Security room
- "2X2 LUXURIOUS" Vitrified tiles flooring
- "DESIGNER" wall & Flooring tiles for bathrooms
- "POWDER COATED" Aluminium Sliding windows
- "2 WAY" Light point in bedrooms
- "FLUSH VALVES" for commodes
- "HOT & COLD" Mixer unit in bathrooms
- "GRANITE" Platform & stainless steel sink in kitchen