

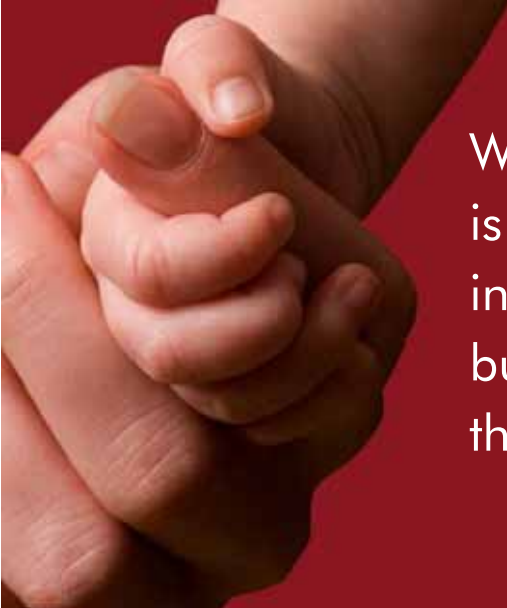


“There's nothing half so pleasant
as coming home again.”

Margaret Elizabeth Sangster



Urbane Park
THE CELEBRITY ADDRESS IN TOWN



What you leave behind
is not what is engraved
in stone monuments,
but what is woven into
the lives of others."

Pericles



A WORLD OF LUXURIOUS HARMONY



Created amidst a wide canvas of green spaces, Urbane Park is a contemporary and stylish urban township in Bhopal.

It is a perfect haven for you and your family to enjoy the peace and tranquility you always craved for.

Urbane Park is a complete lifestyle destination, that beckons you with its splendor.



THE CELEBRITY ADDRESS

IN TOWN

Urbane Park ushers you into its tranquil surroundings. Lush green facade greets you at the entrance and sets the tone for what you are about to behold.

Urbane Park is a luxurious colony of premium residences for the discerning consumer. Utmost importance has been given to design and detailing of the space, making it an excellent blend of beauty & practicality.

Urbane Park offers you a unique identity and an address you'd be proud of.



AN ENVIRONMENTALLY CONSCIOUS CELEBRITY ADDRESS



Emphasis has been laid on making Urbane Park energy and water efficient. Each apartment is meticulously designed to let in fresh air, while cutting out heat.

White roofs and facades reflect light and heat, creating cool and comfortable interiors. Dual Flush system, sewage treatment plant, rain water harvesting and CFLs for common lighting have been incorporated for an eco friendly complex.

Urbane park truly epitomizes green living.



THE NICHE LIFESTYLE

For those seeking an even higher indulgence, we offer Garden Residences. Perched on the beautifully landscaped podium, these breezy residences open out onto a garden creating the exclusivity of a garden villa.

A car-free environment has been created exclusively for children to play. All vehicles will be parked in the podium especially designed for the purpose.

This creates an ultimate backdrop for plush residences in Urbane Park.





LUXURY THAT SPREADS BEYOND

A HUB OF MODERN AMENITIES

For the health conscious, Urbane Park offers a club house with a well equipped gymnasium, yoga & meditation room.

A cricket pitch, squash court and swimming pool has been made available for the sports enthusiasts.

Catering to the social needs Urbane Park houses Party / community hall for social gathering and parties.

Exclusive lifestyle becomes a way of life at Urbane Park.





LIVING SPACES FOR THE DISCERNING SOULS

Your future address... where you get the opportunity to move into peaceful, harmonious and premium living spaces.

The floor plan of every apartment has been carefully designed to allow optimum utilization of space. French windows let in natural light & fresh air.

All this detailing takes your living standard to a star studded lifestyle.



Cherish your visions and your dreams as they are the children of your soul; the blueprints of your ultimate achievements."

Napoleon Hill

KEYS

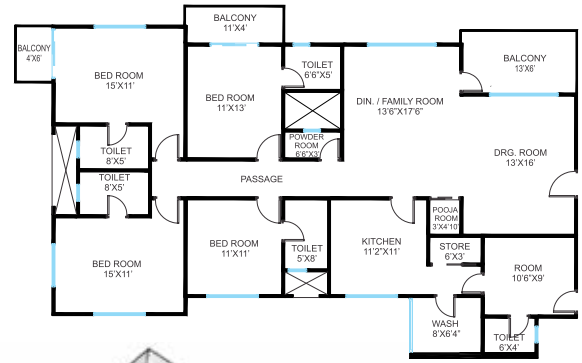
1. Entrance plaza with a Guard room.
2. Visitors Parking.
3. Cricket Pitch / Children play area at ground level.
4. Mound with lawn.
5. Driveway.
6. Club House.
7. Swimming Pool.
8. Landscaped garden at podium level.
9. Raised Time deck with Sculpture.
10. Water features.



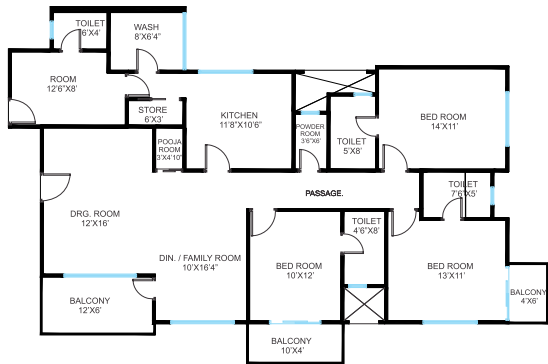
The sheer expanse and meticulous planning of the project takes your breath away. Planned on a green canvas, Urbane Park has on offer 6 residential towers. Each tower has 6 stories which houses 3, 4 & 5 BHK "Avant Garde" apartments.

Exclusive amenities within a fully secured campus, well lit streets, public convenience zones, podium parking and state of the art club house are some of the features that make Urbane Park one of the most prestigious properties in the city.

Urbane Park exceeds the expectations of the most discerning in terms of a lifestyle statement.

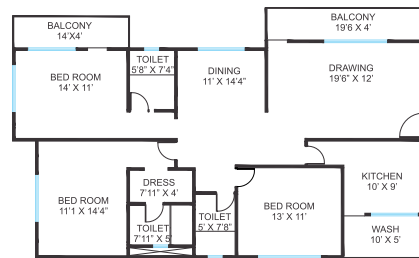


MAGNIFIQUE
 5 bedroom unit plan
 Built up Area: 185.32 Sq. Mtrs. 1944 Sq.ft.



PREMIER

4 Bedroom unit plan
Built up Area: 148.70 Sq. Mtrs., 1600 Sq. Ft.

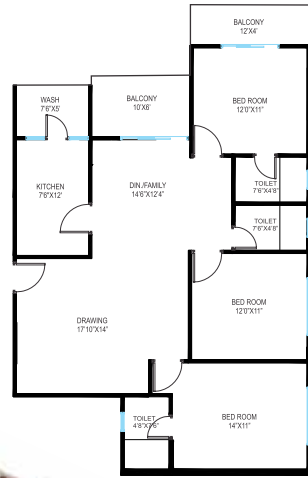


CLASSIC

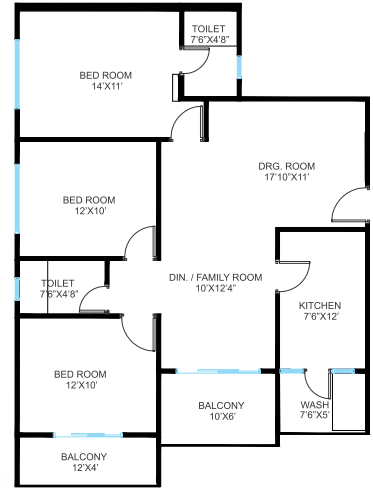
3 Bedroom unit plan
Built up Area: 138.26 Sq. Mtrs., 1488 Sq. Ft.



VIERA
3 bedroom unit plan
Built up Area: 117.34 Sq. Mtrs., 1263 Sq. ft.



CASA
3 Bedroom unit plan
Built up Area: 104.24 Sq. Mtrs., 1122 Sq. ft.





APARTMENT FEATURES

Specification

Toilets

- Ceramic/ Vitrified tile dado up to 8 ft. height.
- Wash basin with marble/granite counter.
- White/Pastel colour sanitaryware.
- Premium quality C.P fittings.
- Single lever hot & cold mixer with overhead shower.
- Concealed plumbing.
- Health faucet.

KITCHEN

- Granite Kitchen platform with S. S. single bowl sink.
- Vitrified tile dado up to 2 ft. height.
- Provision for fixing of water purifier.
- Hot and Cold mixer.
- Store room.*
- Modular kitchen cabinet (optional)
- * Only in Magnifique & Premium

DOORS AND WINDOWS

- Elegant door with laminate on both side and Mortice lock.
- Aluminum sliding powder coated windows with mosquito net.

ELECTRICALS

- Concealed fire resistant high quality copper wiring.
- Ample light point with L&T or equivalent modular switches.
- TV point in drawing room & bedrooms.
- Telephone point in drawing / dining room & bedrooms.
- AC point in drawing / dining room & bedrooms.
- Provision of exhaust fan in kitchen and toilets.
- Miniature circuit breaker.

FLOORING

- 1m x 1m vitrified tiles in Drawing & Dining Room.
- Decorative ceramic tiles in balconies.
- 0.6m x 0.6m vitrified tiles in all bedrooms.

INTERNAL FINISH AND PAINT

- Internal wall finished with smooth coating of POP
- Premium quality emulsion paint on walls.

UTILITY AREA

- Washing arrangement with separate hot & cold water.
- Ceramic tile dado up to 4 ft. height.
- Inlet-outlet provision for washing machine.

AN OASIS OF SECURITY, AND TRANQUILITY



Urbane Park provides a fully secured campus with round the clock CCTV surveillance and 24x7 monitoring by security personnel.

Urbane Park combines all the comforts and the luxuries of modern day living, to create a secure world class environment for you and your family.



LIFESTYLE AMENITIES

Tree lined walkways.

Party lounge and community Hall.

Yoga & Meditation Room.

Green Landscaped Gardens at podium level.

CCTV Camera for constant surveillance.

Entrance Plaza with 24X7 security guard.

Power backup for common areas.

Gymnasium, Cricket pitch, Squash court.

Swimming Pool.

Kids play area with Mound with lawn..

Gated campus.

Podium parking.

“Imagination rules the world”
 Napoleon Bonaparte

Over the past many years Paras Housing has consolidated its reputation as one of Bhopal's premier real estate developer. Paras Housing thinks beyond structures, it envisions a lifestyle for its customers well beyond their expectations.

The definition of a perfect home has evolved over time, it goes beyond providing a mere living space... it becomes a lifestyle statement.

At Paras Housing, every home that we construct goes through a litmus test. Paras Housing has been developing homes for over a decade and has been delivering projects with uncompromising quality and values beyond expectation that have stood the test of time.

It is this commitment towards 'creating a better community living' that has been the core value driving growth at Paras Housing, which is reflected in the past projects.



PARAS HOUSING, BUILDING TRUST AND TIMELESS LUXURY

PARAS CITY

Not just homes but better communities



PARAS MAJESTIC

Thoughtfully designed and spacious row house



A pleasant location for luxurious lifestyle

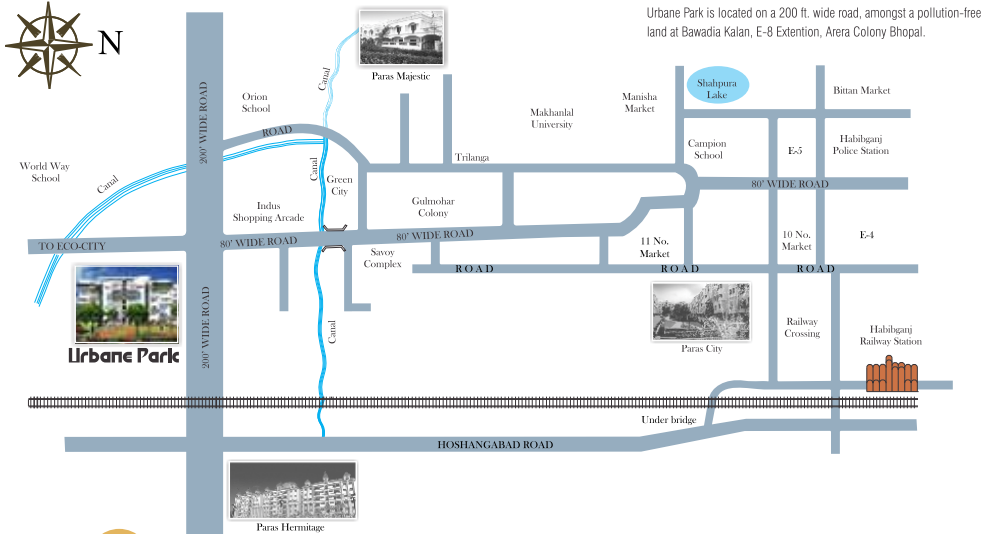


PARAS Midas

Developed Residential Plots



LOCALE AT PAR



Urbane Park is located on a 200 ft. wide road, amongst a pollution-free land at Bawadia Kalan, E-8 Extension, Arera Colony Bhopal.



Developers: **PARAS HOUSING (INDIA) PVT. LTD**

Bhopal Office : 243-B, Zone-1, M. P. Nagar, Bhopal (M. P.)

Tel.: 0755 - 2571569, 2571596, Fax: 0755 2573301.

E-mail: parashbhopal@parashousing.com

Mumbai Office : 206 Landmark Building, Opp. Raheja Complex, Near Valecha

Chamber, New Link Road, Andheri (W), Mumbai - 400053 Ph.: 022 26743191

E-mail : parasmumbai@parashousing.com

URL : www.parashousing.com

Project Approved for Housing Loan from:



ARCHITECT:
L. S. VASWANI ARCHITECTS
PVT. LTD.

LANDSCAPE ARCHITECT:
KAVITA SRIVASTAVA
PVT. LTD.

Disclaimer : The plans, specifications, images and other details herein are only indicative and the developer/owner reserve the right to change any or all these in the interest of the development. This printed material does not constitute an offer and/or contract of any type between the developer/owner and the recipient.

